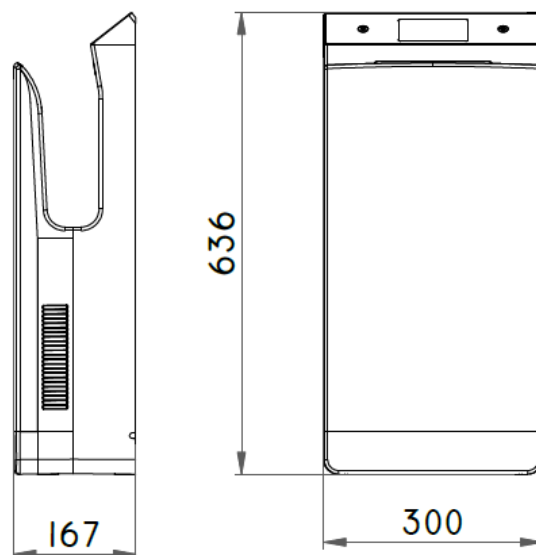


# SPEED MAX 500

## ULTRA FAST AUTOMATIC HOT AIR HAND DRYER

### Ultra Compact



## ASSORTMENT

SM500 (b) SM-500AB01JT000	Abs white	SM500 (A) SM-500AB02JT000	Abs Black
---------------------------	-----------	---------------------------	-----------

### VOCE CAPITOLATO

Electronic air blade hand dryer with photocell activation. High speed Jet System type motor with ON/OFF power switch Stand-By soft touch screen and physical switch to exclude the air heating element.

Equipped with a removable drip tray on the bottom. Hygiene system composed of double EPA filter and double sanitizing UV LED located inside the engine.

Medium drying time: 10-15".

Protection degree against the insertion of foreign bodies and against water IP23. Electrical insulation class Class II.

Operating voltage: 220/240 V. Mains frequency: 50/60 Hz. Total absorption from a min of 850 Watts to a max of 1350 Watts.

Equipped with an automatic temperature sensor that regulates the switching on of the electric heater to heat the air flow only when the room temperature falls below 20°C, resulting in considerable energy savings.

## ULTRA FAST AUTOMATIC HOT AIR HAND DRYER

### Ultra Compact

#### TECHNICAL SPECIFICATIONS

	<i>SM500</i>
activation	sensor
lid material	abs
surface treatment	White / black
electrical insulation class	classe II
degrees of protection	IP23
operating voltage	220/240V
mains frequency	50/60 Hz
Rated motor power	850 W
Heating power	500 W
nominal consumption min - max	850W-1350 W
fixed air outlet speed	325 Km/h
max consumption per drying	0.0028 KW/h 0.002 KW/h (heating element off)
average drying time	10-15 "
noise dB measured at 1 metre	73 dB
air filter	Epa
Air Temperature	20-40°C, Temperature automatic adjusting with environment temperature
machine size (mm)	H 636 x L 300 x P 170 mm
Uva device	2 x 1.5 Watt
ionizer	Installed in air conveyor
weight	7 Kg



**EPA filters for sterilization**  
Air intake



**button soft touch ON -OFF temperature probe**

**button soft touch ON -OFF APPARECCHIO**



**switch ON -OFF resistenza**



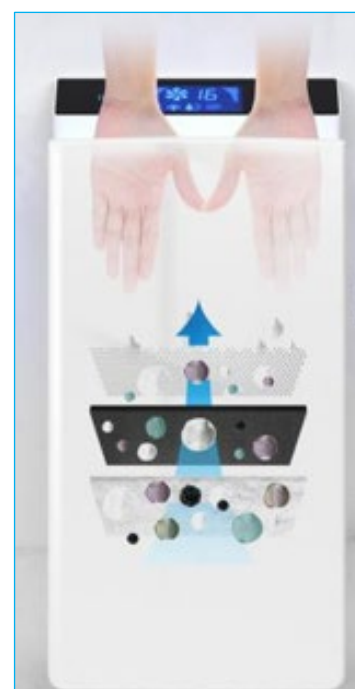
**Light Uv**

**light negative ions**

**Heating element warning light**



**Running timer**  
Drying time display from 20" to 0"



**UV LED for bacterial load reduction**

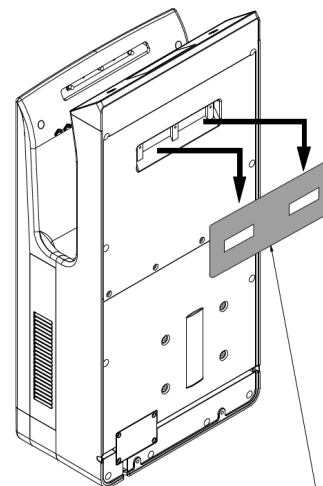
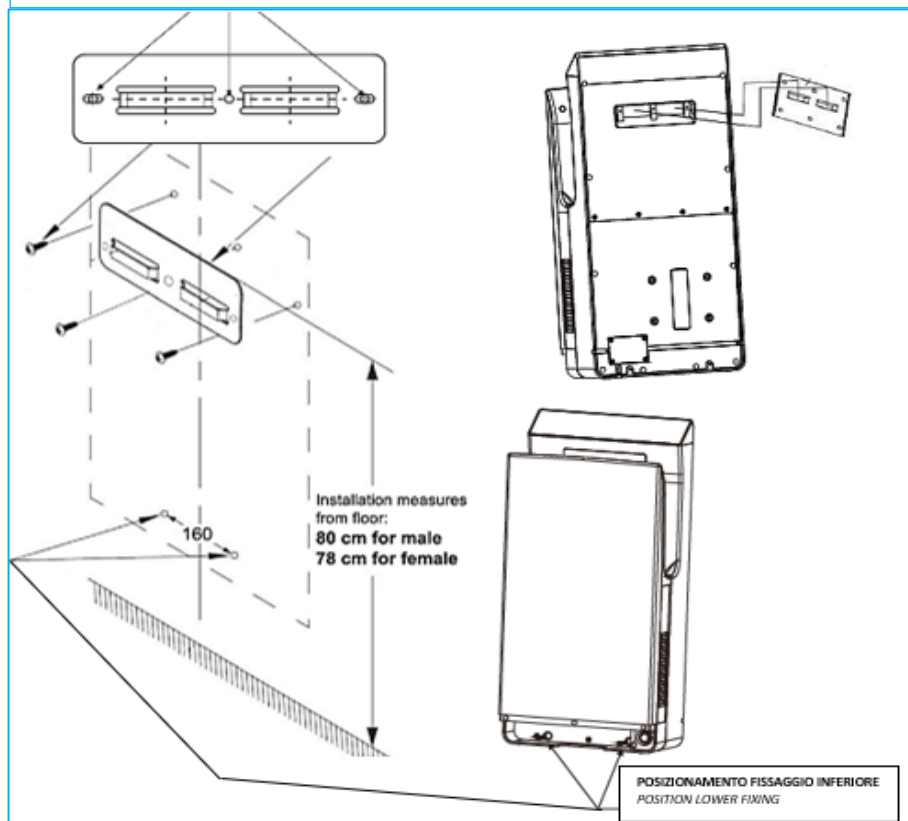
# SPEED MAX 500

## ULTRA FAST AUTOMATIC HOT AIR HAND DRYER

### Ultra Compact

### INSTALLAZIONE

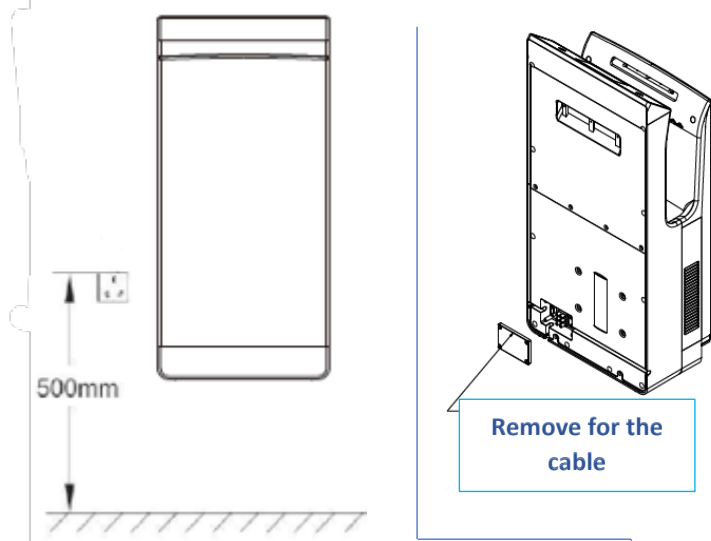
BRACKET SUPPLIED TO SUPPORT HAND DRYERS (USE 8mm dowels supplied)



Wall mounting

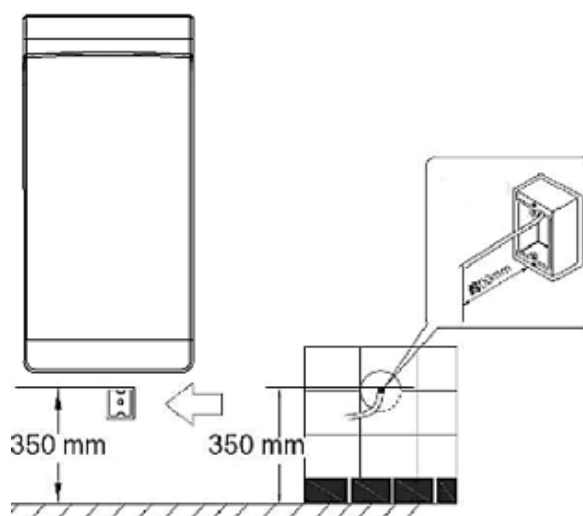
### ELECTRICAL INSTALLATION

#### STANDARD WALL INSTALLATION (EXPOSED PLUG)



The appliance IS SUPPLIED WITH A POWER CORD AND PLUG. The wall socket to be connected to must be at a recommended distance of 50 cm from the floor on the left or right side of the appliance

#### WALL INSTALLATION UNDERGROUND CABLE



In the case of concealed installation (hidden power supply), the appliance plug can be removed without this voiding the warranty. Follow the diagram on the right for the placement of the junction box

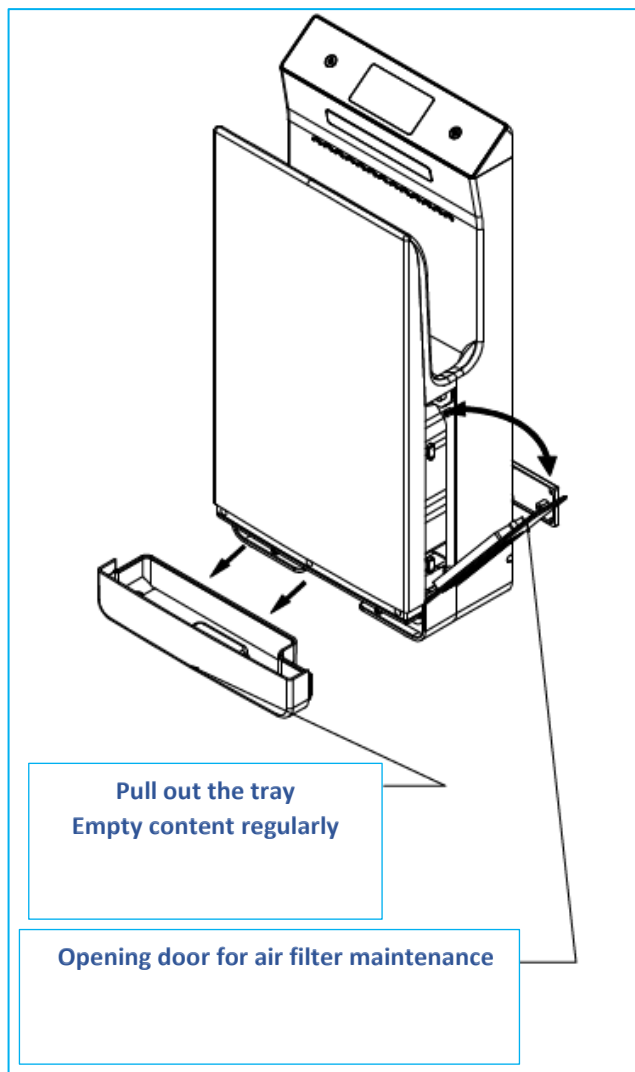
## ULTRA FAST AUTOMATIC HOT AIR HAND DRYER

## Ultra Compact

## CLEANLINESS

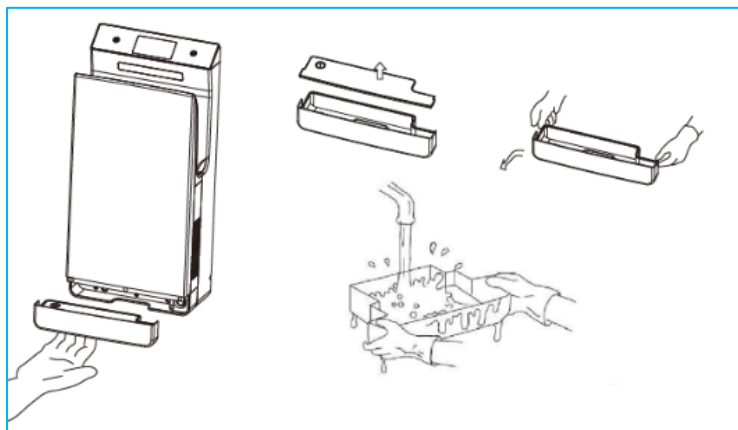
## CLEANLINESS

Wipe with a damp cloth. Use neutral, non-abrasive, solvent-free detergents.



Cleaning EPA filters (filters should be cleaned at least 6 times a year) or according to the frequency of use of the appliance. Place them in the grids located outside the appliance. Clean with compressed air at a close distance to avoid damaging the filter

Periodically empty the water recovery box depending on how often you use the appliance. It is possible not to use the drip tray by inserting a hose into the sleeve provided on the machine, under the tray, connecting directly into the condensate recovery system.



**BEFORE CLEANING, TURN OFF THE HAND DRYER. DO NOT THROW WATER DIRECTLY ON THE HAND DRYER.**

Wipe the unit with a soft cloth. If the unit becomes very dirty, wipe with a soft cloth moistened with neutral detergent, then wipe dry with a soft, dry cloth.

Clean the sensors thoroughly to prevent malfunctions.

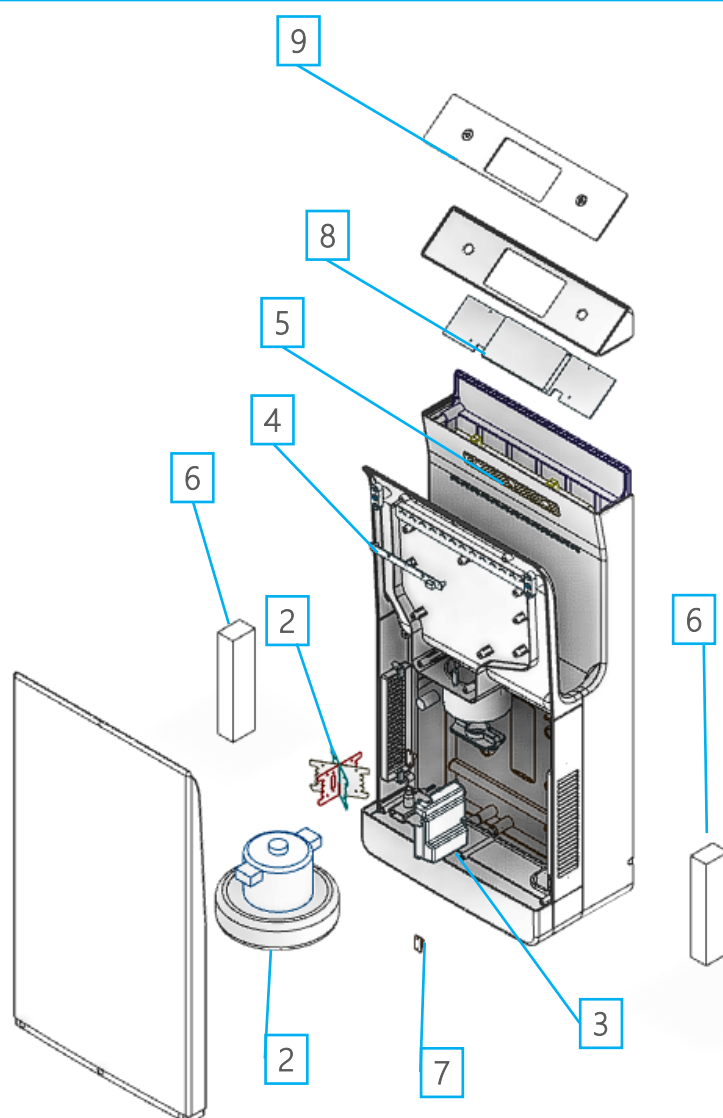
Use only neutral detergent. Do not use solvents, acids, disinfectants, alkaline or toilet cleaning agents, or abrasive nylon brush, otherwise, they may damage the surface.

## ULTRA FAST AUTOMATIC HOT AIR HAND DRYER

### Ultra Compact

#### SPARE PARTS

1	SMR500-121	Heating elem SPEED-MAX 500
2	SMR500-122	MOTOR SPEED-MAX 500
3	SMR500-155	ELECTRONIC BOARD
4	SMR500-156	FRONT SENSOR BOARD TRANSMITTER
5	SMR500-156P	REAR SENSOR RECEIVER BOARD
6	SMR500-500	PAIR OF EPA FILTERS
7	SMR500-207	LED UV
8	SMR500-208	LED BOARD
9	SMR500-209	GLASS PANEL



#### PACKAGING AND EQUIPMENT

N°1	Main unit (DRYER)
N°4	Plastic dowels for wall mounting
N°4	Steel screws for wall mounting
N°1	Special spanner for lid removal/installation
N°1	Instruction manual
N°1	Paper template



WARNINGS FOR THE CORRECT DISPOSAL OF THE PRODUCT ACCORDING TO EUROPEAN DIRECTIVE 2002/96/EC.

At the end of its useful life, the product must not be disposed of with municipal waste. It can be handed in at the special separate collection centres set up by municipal authorities, or at retailers who provide this service. Disposing of a household appliance separately avoids possible negative consequences for the environment and health resulting from its inappropriate disposal and allows the materials from which it is made to be recovered in order to achieve significant savings in energy and resources.